



**MAXWILL INDUSTRIAL CORP**

**CASTING, FORGING & STAMPING**



# WE ARE MAXWILL

Qingdao Maxwill Industrial Corp.

🕒 Established in 2000

Maxwill was established in 2000. We began as a key provider of marine castings for companies and industries throughout the Shandong province.

In 2002, we exported marine castings, municipal casting, constructing products, electrical power fittings and stamping products to the USA and the UK.

## Since 2006

Since 2006, we have cooperated with domestic automobile manufacturers, becoming their Tier 1 and Tier 2 suppliers. In the same year, We expanded our team of engineers to develop OEM products.



## 2006 - 2018

From 2006 to 2018, in the context of economic globalization, our domestic orders are still stable, and OEM products have gradually become our main products. We sell pretty well in over 40 countries and areas worldwide. Our customers have well received the customized solutions we provide for different demands.

Based on the needs of new product development and the concept of continuous innovation in our company, our production equipment has been continuously updated in the past 15 years. For instance, electric furnaces replaced old-fashioned cupolas; CNC lathes replaced old lathes. We also purchased much new equipment, such as machining centers, welding robot, laser cutting machine, and others. We believe that only through continuous self-improvement can the enterprise have a better future.



## 2019

In 2019, under the principle of environmental protection, our factory underwent a significant upgrade. Our factory built a new automatic line of clay sand casting with an average capacity of 50 tons per day. At the same time, we have retained the original manual molding workshop with an average capacity of 10 tons per day. We also purchased three new core shooting machines, manufacturing 15 tons of shell casting products per day.

Good quality is the foundation, and continuous innovation is the soul of Maxwill.  
We are willing and eager to accept the most advanced production technology and keen to recruit capable and responsible technical talents.

# CONTENTS



**CASTING**

**1**

**FORGING**



**8**



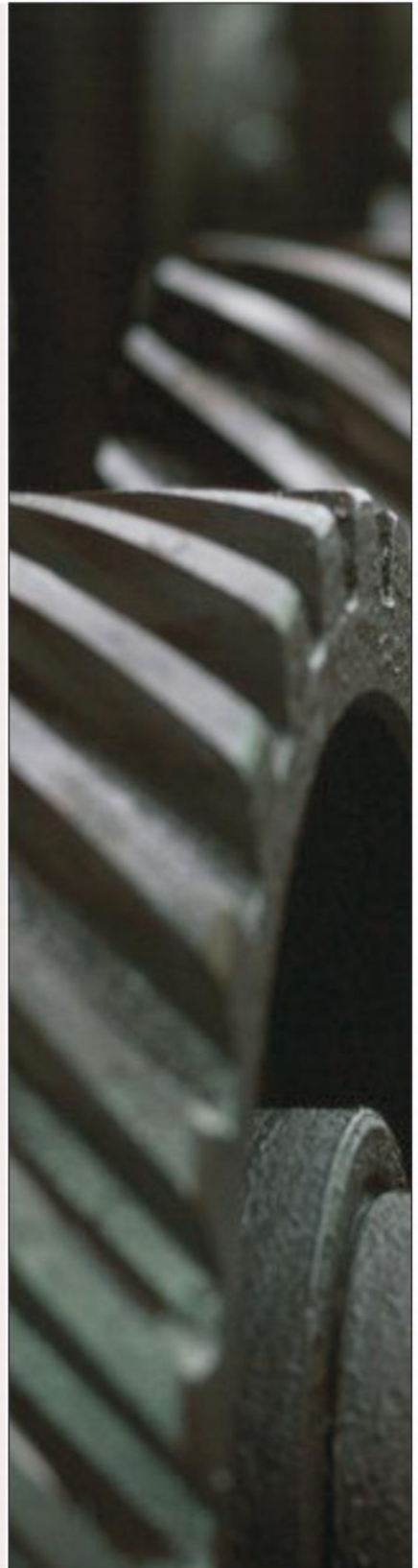
**STAMPING**

**13**

**OUR FACTORY**



**16**



## CASTING

*Maxwill is focused on manufacturing high-quality cast iron parts for a variety of industries, including marine castings, municipal casting, constructing products, electrical power fittings, and automobile products.*

*Our automatic line of clay sand casting has an average capacity of 50 tons per day. We have also retained the original manual molding workshop with an average capacity of 10 tons per day. At the same time, we can manufacture 15 tons of shell casting products per day.*



### **MATERIAL:**

*Grey Iron, Ductile Iron, Steel, Malleable Iron, Vermicular Cast Iron*

### **PROCESS:**

*Shell Casting, Sand Casting and Investment Casting*

### **FINISHING:**

- *Precision drilling, tapping and grinding*
- *Heat treatment*
- *Painting, coating, HDG and other specialist finishes*
- *Assembly to integrate castings into sub-assemblies*
- *Bespoke packaging*

## APPLIANCE INDUSTRY

---



## AUTOMATIVE INDUSTRY

---



## MAXWILL CASTING FOUNDRY IS EQUIPPED WITH

- 4 new casting production lines
- 12,000 tons Annual production capacity
- Core shooting machine for cold-core/hot-core
- Automatic molding machines
- Shell molding line
- Clay sand casting, resin sand casting, shell casting, hot core casting.



## ENERGY INDUSTRY



## HEAVY RAIL INDUSTRY

---



## INDUSTRIAL INSTRUMENTS

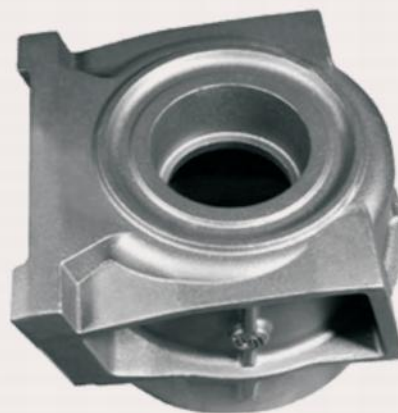
---





## Leading Products (100 Series And More Than 3000 Varieties)

- *Marine iron anchors*
- *Propeller brackets*
- *Expansion bolts*
- *Mining machinery parts*
- *Pipe fittings*
- *Municipal castings*
- *Power fittings accessories*
- *EMU supporting products*
- *Exported to more than 50 countries and regions in Europe, America, and Southeast Asia.*





## MACHINE INDUSTRY

---



## PLUMBING AND SEWAGE SYSTEMS

---



## POWER FITTINGS

---



## MAINLY FORGING EQUIPMENT:



## FORGING

*Maxwill as a professional forged metal parts supplier with over 10 years of experience in the forging industry. We specialize in cold, hot, and warm forging and precision machining for automotive, hardware, electrical, and railway industries.*



NAME OF EQUIPMENTS	CAPACITY	QUANTITY
Hot Die Forging Machine	1000 Ton	19 Lines
Hot Die Forging Machine	1600 Ton	
Hot Die Forging Machine	2500 Ton	
Hot Die Forging Machine	4000 Ton	
Double Plate Pressed Machine		12 Lines
Chain Belt & Multi-Purpose SPC Heat Treatment Line		8 Sets
Isothermal Firewire Production Line		
CNC		100 units
Outline Instrument		1 set
Universal Tool Microscope		1 set
Universal Material Experimental Machine		1 set
Fatigue Test Machine		1 set
CMM		1 set
Intelligent Automatic Analyzer		1 set
Magnetic Particle Detector		1 set

## ADVANCED TESTING EQUIPMENTS:





MATERIAL	Carbon Steel, Alloy Steel, Stainless Steel, Aluminum Alloy and Brass
APPLICATION	Automotive Industry, Energy Industry, Heavy Rail Industry and Industrial
TECHNICS	Hot Forging and Warm Forging
INSPECTION	First Article Inspection, Inline Production Inspection, and pre-shipment
FORGING MACHINE	1000T, 1600T, 2500T and 4000T

PRODUCTS GALLERY:



## STAMPING

*From concept to completion Maxwill is a full service metal stamping facility. We utilize the latest technologies and staff some of the most knowledgeable engineers to ensure our mission is completed consistently. In every metal stamping manufacturing area, we strive to utilize the most up to date technology to deliver the highest quality metal stamping product to our customers.*





## EQUIPMENTS LIST:

NAME OF EQUIPMENTS	CAPACITY QUANTITY
<i>Straight Slide One Point Press</i>	<i>250 Ton 1 unit</i>
<i>Straight Slide One Point Press</i>	<i>400 Ton 1 unit</i>
<i>Straight Slide Two Point Press</i>	<i>250 Ton 2units</i>
<i>Straight Slide Two Point Press</i>	<i>400 Ton 4units</i>
<i>Straight Slide Two Point Press</i>	<i>630 Ton 2units</i>
<i>Straight Slide Two Point Press</i>	<i>800 Ton 1 unit</i>
<i>Single-action Punching Hydraulic Press</i>	<i>315 Ton 1 unit</i>
<i>Single-action Punching Hydraulic Press</i>	<i>500 Ton 1 unit</i>
<i>Single-action Punching Hydraulic Press</i>	<i>630 Ton 2units</i>
<i>Single-action Punching Hydraulic Press</i>	<i>800 Ton 1 unit</i>
<i>Single-action Punching Hydraulic Press</i>	<i>1600 Ton 1 unit</i>
<i>Double-action Punching Hydraulic Press</i>	<i>1030 Ton 2units</i>
<i>Double-action Punching Hydraulic Press</i>	<i>2500 Ton 1 unit</i>
<i>C-frame Press</i>	<i>160 Ton 5units</i>
<i>C-frame Press</i>	<i>100 Ton 8units</i>
<i>C-frame Press</i>	<i>80 Ton 8units</i>
<i>C-frame Press</i>	<i>40 Ton 10units</i>
<i>C-frame Press</i>	<i>25 Ton 12units</i>



## METAL STAMPING PRODUCTS:



### VEHICLE ACCESSORIES

Material: HX380LAD Z100

Applications: Vehicle Door accessory

Machines: Stamping machine, Laser cutting machine

Process: Laser cutting, Draw, Trim, Form



### LCD MONITOR STAMPING METAL PLATE

Material: SGCC DC51D Galvanized sheet

Applications: Electronic equipment accessories

Machines: Stamping machine



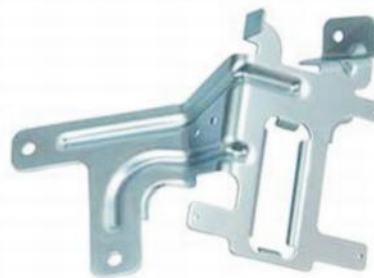
### CUSTOMIZED STAMPING PRODUCT

Material: Carbon steel 08F

Applications: Electronic equipment accessories

Machines: Stamping machine 300t, laser cutting machine

Process: Laser cutting, deburring, special mold forming, E-coating



### CUSTOMIZED STAMPING PART

Material: Carbon steel Q345

Applications: Electronic equipment accessories

Machines: Stamping machine 300t, bending machine, laser cutting machine

Process: Laser cutting, deburring, special mold forming

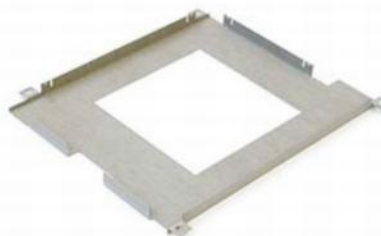


### ELECTRONIC STAMPING PARTS

Applications: Electronic equipment accessories

Machines: Stamping machine 250t, bending machine

Process: Blanking, Deburring, Bending, special mold forming, punching



### LASER CUTTING WITH STAMPING

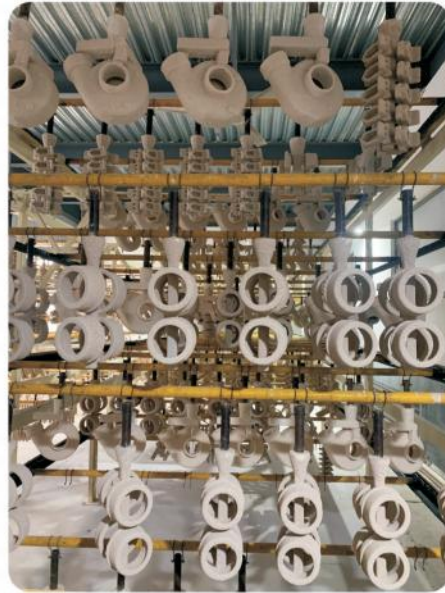
Material: Carbon steel Q235

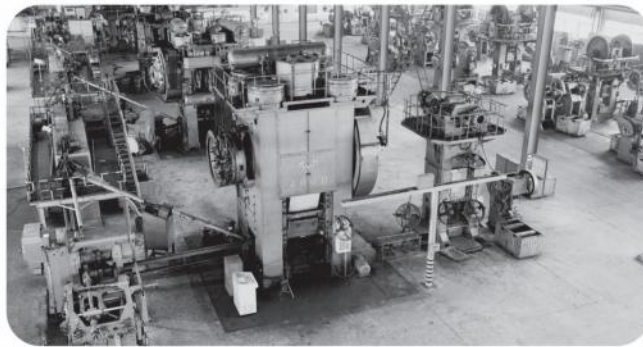
Applications: Electronic equipment accessories

Machines: Laser cutting machine, bending machine

Process: Laser cutting, Deburring, Bending

## OUR FACTORY





**MAXWILL INDUSTRIAL CORP**

✉ MAXWILL INDUSTRIAL CORP 1001-100 Hong Kong Middle Road, Qingdao, China, 266071  
☎ +86-532-67702702 ☎ +86-532-85930210 ✉ info@maxwill-ind.com  
🌐 www.maxwill-ind.com

